



# MONTHLY MEMBERSHIP PROGRESS REPORT

District 202 K

Results as of: 04/30/2018

GMT: CLIFFORD HEYWOOD

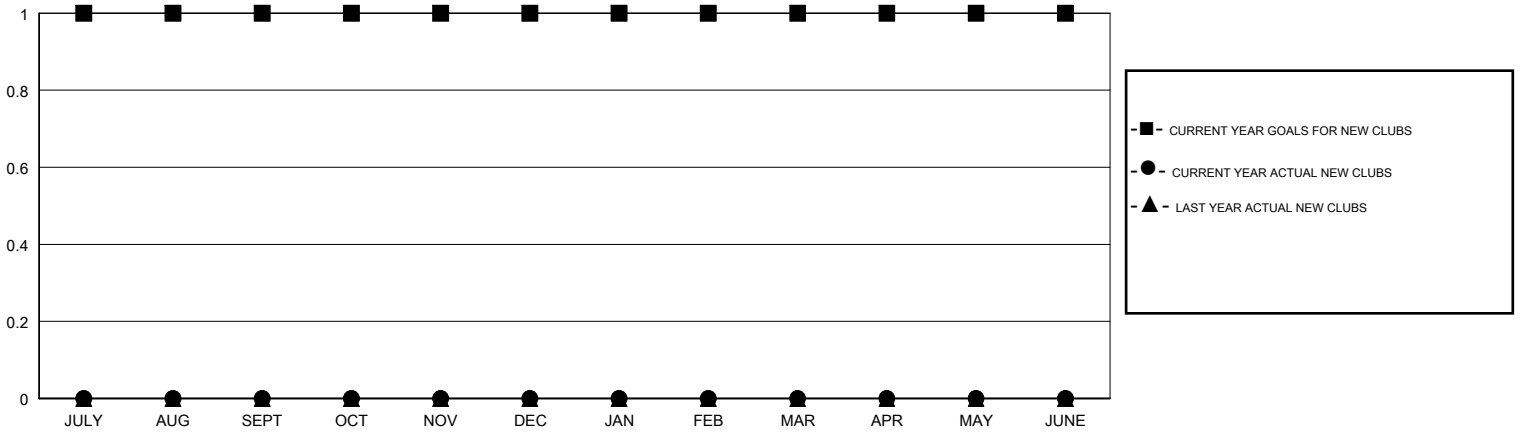
LOCATION NEW ZEALAND

GMT CA

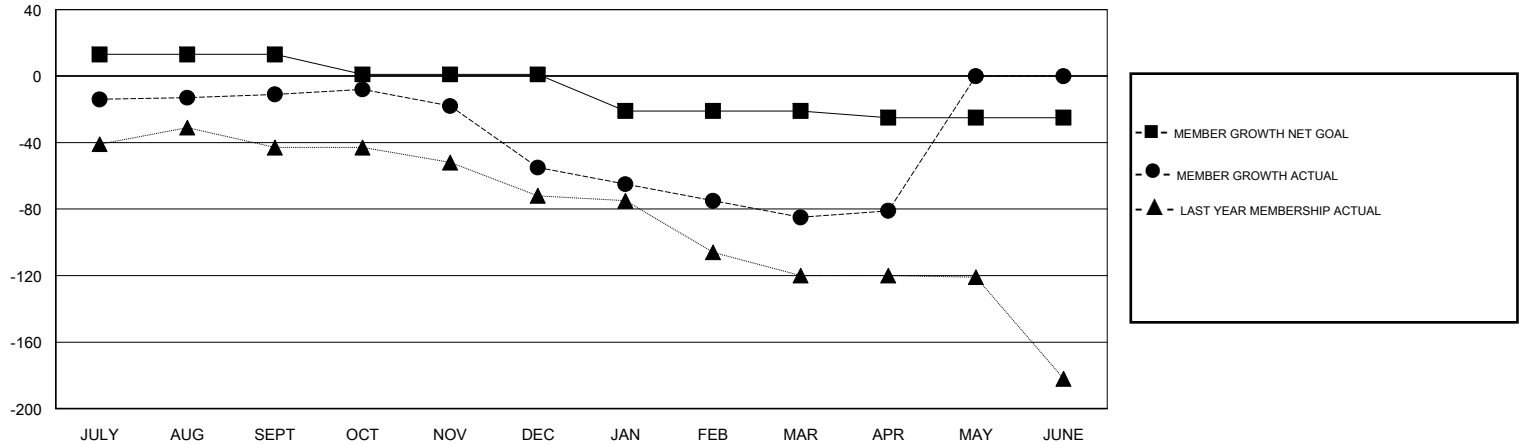
Clubs			
RESULTS FOR 2017-2018			
QUARTER	NEW CLUB GOAL	NEW CLUBS	DROPPED CLUBS
JULY/AUG/SEPT	1	0	2
OCT/NOV/DEC	0	0	0
JAN/FEB/MAR	0	0	0
APR/MAY/JUNE	0	0	0

Members			
RESULTS FOR 2017-2018			
QUARTER	MEMBER GROWTH NET GOAL	MEMBER GROWTH ACTUAL	DROPPED MEMBERS ACTUAL (including transfers)
JULY/AUG/SEPT	13	50	46
OCT/NOV/DEC	-12	48	83
JAN/FEB/MAR	-22	24	45
APR/MAY/JUNE	-4	21	14

GOALS AND ACTUAL NEW CLUBS CUMULATIVE



GOALS AND ACTUAL MEMBERS CUMULATIVE



DROPPED CLUBS: 2	42 CLUBS OF 77 ADDED 1 OR MORE NEW MEMBERS	<u>GENDER DISTRIBUTION</u> MALE 1,061 (68.63%) FEMALE 485 (31.37%) Women Percentage Fiscal Year Goal: 33%
<u>DROPPED MEMBERS</u> DECEASED 21 CLUB CANCELLED 0 OTHER 167 TOTAL 188	<a href="#">CLICK HERE FOR CUMULATIVE MEMBERSHIP DATA</a>	TOTAL FAMILY UNIT MEMBERS 206 FAMILY MEMBERS PAYING HALF DUES 104